

THE TRUE LIGHT SCHOOL OF HONG KONG

Principal's Office 2577 3368
Secondary Section 2576 0703



Primary Section 2576 5716
Kindergarten 2577 3569

50 Tai Hang Road Hong Kong

www.tlmshk.edu.hk

16 April, 2025

By Email

Dear Sir/Madam,

Invitation for Expression of Interest (EOI) and Shortlisting for The Redevelopment of the Primary and Kindergarten Sections of The True Light School of Hong Kong

“Thou art the Light of the World” - The motto of the school was derived from the Chinese translation of the biblical phrase: ‘Thou art the Light of the World’ (爾乃世之光) (Matthew 5:14). We hope our students can become the light of the world – the future light-bearers and seed-sowers of the Christian faith.

The existing Primary Section and Kindergarten Section block was completed in 1955. Despite the continued effort to maintain and update the facilities, it struggles to keep up with today’s pedagogy, spatial and functional requirements. In order to meet the escalating standards of teaching and learning, the existing block together with the adjacent existing swimming pool are to be demolished to make way for a New Block. The New Block will replace all the demolished facilities, plus additional provisions such as a new school hall and a new collection of multi-purpose rooms. The New Block will also connect all the floor levels on the sloping site via a grand staircase, and it will open up the campus towards the open view of Tai Hang via an extended plaza from the original fountain to the edge of the open sports ground.

Besides the New Block, the project will also involve enhancements to the existing secondary school block, the millennium block, and the centennial school hall. The shared open spaces and landscaped areas within the campus will be improved holistically to create a student-centric and cohesive place for growth for the entire student body. The schematic design is shown in Attachment 1 for reference.

To deliver the project, we would like to invite Expression of Interest from consultants to provide Lead Architectural and Associated Consultancy Services.

Based on the schematic design and the corresponding statutory procedures that are currently underway, this consultancy services shall cover design development to project completion. Lead Architectural Consultancy Services shall include all necessary engineering disciplines including but not limited to civil, structural, geotechnical engineering, building services engineering, landscape architecture, interior design, AV/IT design, project management, etc. as sub-consultancy services. A quantity surveying consultant has been appointed separately.

Consultancy works tentatively commence in September 2025 and the construction is envisaged to be completed by August 2030 plus a year of Defect Liability Period.

True Light has a proud history in a persistent pursuit of quality education and all-round development of children, and anticipates that the redevelopment project will further strengthen our capabilities and established image as a leading education institution. Should you be interested in the project, please provide us with your duly completed and signed Reply Slip (Attachment 2) **by email** (tlhk100@tlmshk.edu.hk) **and by post on or before 12:00p.m., 30 April 2025 (Wednesday)**. Late submission will not be considered.

The close of the submission may be extended if tropical cyclone signal No. 8 or above, or a black rainstorm warning signal is hoisted or if “extreme conditions after super typhoons” announced by the Government is in force between 9 am and 12 noon on the date set for the close of submission, the close of submission will be extended to 12 noon on the first working day after the tropical cyclone signal No. 8 is lowered, or the black rainstorm warning signal or the “extreme conditions after super typhoons” announced by the Government has/have ceased to be in force.

As part of your Expression of Interest response, please provide us with your and sub-consultants’ proposed Organization Chart, C.V. of key personnel and relevant project references in terms of similar nature and scale.

The School is not bound to include all consultants whose EOI is received to submit fee proposal. Should you have any queries please contact our Mr. Wood Cheung at 2576-0703 or tlckw@tlmshk.edu.hk.

Yours faithfully,

For and on behalf of
The True Light School of Hong Kong

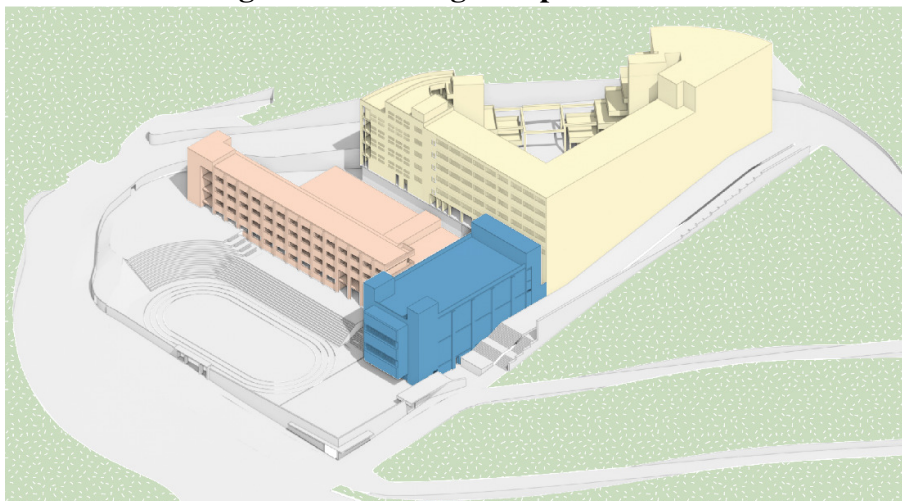
Hui Tuen Yung
Principal, The True Light School of Hong Kong

Attachment 1

The Redevelopment of the Primary and Kindergarten Sections of The True Light School of Hong Kong

Schematic Design

Axonometric Diagram of Existing Campus

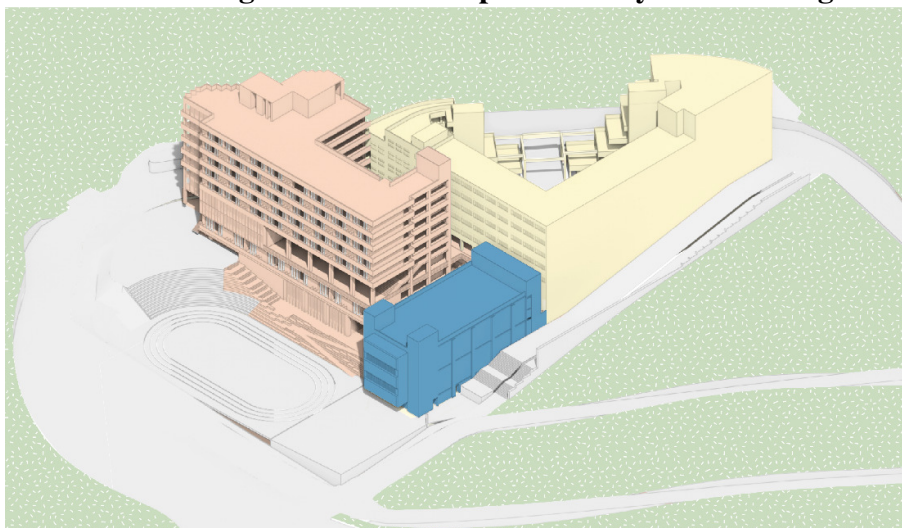


Yellow: Existing Secondary School Block & Millennium Block

Blue: Existing Centennial School Hall

Pink: Existing Primary and Kindergarten Block

Axonometric Diagram of Redeveloped Primary and Kindergarten Block



Yellow: Existing Secondary School Block & Millennium Block

Blue: Existing Centennial School Hall

Pink: New Block

Basic Project Parameters of New Block

GFA: ~11,740 sqm

Floors: 8

Tentative Program: School Hall, swimming pool, grand staircase, open playground, covered playground, basketball court, lecture hall, multi-purpose rooms, library, classrooms, back of house support spaces.

Attachment 2

**The Redevelopment of the Primary and Kindergarten Sections
of The True Light School of Hong Kong**

Reply Slip

To: Principal Hui, The True Light School of Hong Kong

We hereby express that we ***have / have no** interest in submitting tender for the captioned project.
We also confirm that we are prepared to submit our fee proposal upon invitation.

For and on behalf of

Signature with Company's Chop

Name:

Position:

Date:

* Delete as appropriate